

# GBC® EZLoad® Gray End Cap Laminating Roll Film, Low Temp, Gloss, 25" x 250', 3 mil, 1 Roll



3125702EZ

## PRODUCT DESCRIPTION

GBC Pinnacle™ 27 EZLoad Low Temp Roll Film is designed to make laminating easier for busy educators by taking the guesswork out of film loading. EZLoad technology helps eliminate film loading errors.

## FEATURES

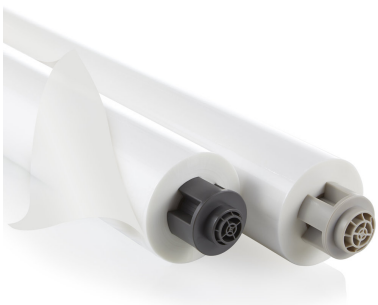
- EZLoad technology helps eliminate film loading errors. Color coded light gray and dark gray end caps show the correct way to load film, which avoids accidental upside down loading.
- GBC EZLoad NAP II Laminating Film 25" x 250' is compatible only with GBC Pinnacle™ 27 EZLoad Laminators (post 2017), which have gray saddles
- Choose the right film for your job. The 3 mil thickness provides protection while retaining flexibility. Select 5 mil if you need something protective with more rigidity.
- NAP II film is typically used for projects with heavy ink coverage or delicate items
- Keep your documents bright and bold. Glossy film has a shiny finish that helps emphasize colors.

## SPECIFICATIONS

**Cold Lamination** Yes  
**Core Diameter** 1"  
**Date Indicator** Undated  
**Film Type** Thermal - Low Temp  
**Finish** Gloss  
**Roll Length** 250'  
**Roll Width** 25"  
**Thermal Lamination** Yes  
**Thickness (mil)** 3  
**Dimensions** 25" x 250'

## ADDITIONAL INFORMATION

**Country of manufacture** China  
**Minimum Order Quantity**  
**Lowest possible unit** Case



## INNER

Depth 0  
 Width 0  
 Height 0  
 Gross weight 9.8lb  
 UPC# 00033816300552  
 Unit quantity 1  
 Cases/Layer  
 Layers/Pallet

## ROLL

Depth 25"  
 Width 2.125"  
 Height 2.125"  
 Gross weight 9.8lbs  
 UPC# 033816300552  
 Unit quantity 1  
 Cases/Layer 6  
 Layers/Pallet 11

## CASE

Depth 31.5"  
 Width 8.38"  
 Height 4.38"  
 Gross weight 19.65lbs  
 UPC# 50033816300557  
 Unit quantity 2  
 Cases/Layer 6  
 Layers/Pallet 11

## PALLET

Depth 48"  
 Width 40"  
 Height 52.63"  
 Gross weight 1296.9lbs  
 UPC# 70033816300551  
 Unit quantity 132  
 Cases/Layer 6  
 Layers/Pallet 11

## EACH

Depth 25"  
 Width 2.13"  
 Height 2.13"  
 Gross weight 9.8lb  
 UPC# 033816300552  
 Unit quantity 1

